



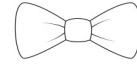
# 3 Keys to Success in Barcode Label Application

## • Time



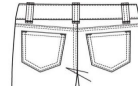
LIGHT GARMENTS  
or FABRICS

10-12 Seconds



HEAVY FABRICS

12-14 Seconds



## • Temperature



TOP HEAT

365°-375° F      185°-190° C

BOTTOM

300°-330° F      148°-165° C



## • Pressure



2" x 4" PLATEN

25 - 30 psi (air)

3" x 5" PLATEN

50 - 60 psi (air)

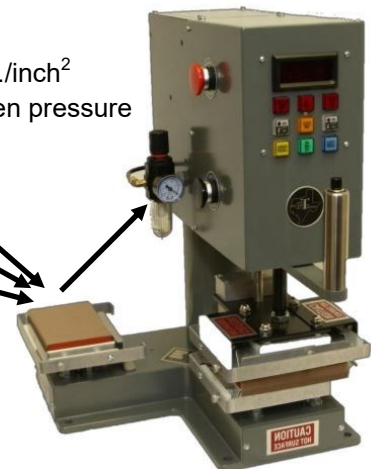
4" x 6" PLATEN

70 - 85 psi (air)

3-1/4" x 5" GOOSENECK

55 - 65 psi (air)

25-28 lbs./inch<sup>2</sup>  
 inter-platen pressure



For more information on application, heat seal machine settings, trouble shooting:  
 see our website [ipc-tags.com](http://ipc-tags.com) and click on 'Resources and Links' and then click on 'Application Specs for HT Labels'.

For ordering labels, prices, or more information contact [Amber@ipc-tags.com](mailto:Amber@ipc-tags.com)

Customer Service: 817-714-8400 • Order Fax: (817) 887-1725 • Corporate (972) 822-0934



# BARCODE LABEL STORAGE INSTRUCTIONS

To prolong the quality of the label,  
store in a dark, dry dust-free atmosphere  
at room temperature (approx. 68-75° F or 20-21° C).

**DO NOT FREEZE OR PLACE NEAR HEAT SOURCE**

**The Best Used By date (MM/YYYY)**

**is printed on the box label of each package of 1,000 labels.**

**When properly stored, the shelf life of an unapplied label is  
at least 14 months.**

